



XG3246AC

MOBILE ELEVATING WORK PLATFORM

Comply with ANSI/CSA



XG3246AC

MOBILE ELEVATING WORK PLATFORM

FEATURES

MEASUREMENTS

12m (39' 4") working height
Up to 320 kg(705lbs.) lift capacity

PRODUCTIVITY

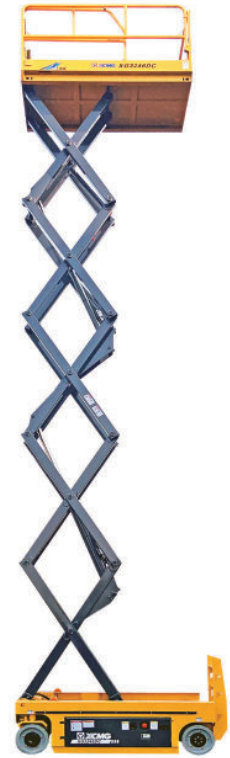
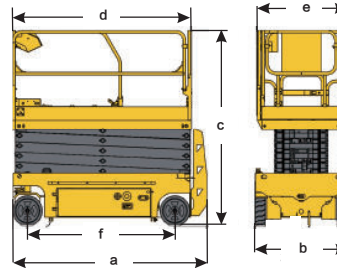
2.277m (7' 6") x 1.120m (3' 8") steel platform
0.9m(2' 11") extension platform
Front wheel drive
25% theoretical gradeability – stowed/lowered position
Platform control with battery charge indicator and diagnostic display
Manual platform lowering valve
Both platform and ground control emergency stop activation
Front wheel multiple disc brakes
Manual brake release
Solid non-marking tires
Mobile pothole protection
Tilt alarm
Hour meter
Lift and lower alarm
Horn
Dual flashing beacons
Motion alarm
Load warning system

POWER

24V DC

OPTIONS

Platform work lamp
Compressed air line to platform
Platform AC power supply



MAIN PARAMETER

Item	Metric	Imperial	
Machine Dimensions	a.Length (without ladder)	2.477 m (2.267 m)	8 ft 2 in (7 ft 5 in)
	b.Width	1.17 m	3 ft 10 in
	c.Height (Platform Folded)	2.48 m (1.93 m)	8 ft 2 in (6 ft 4 in)
f.Wheel base	1.877 m	6 ft 2 in	
Wheel track	1.043 m	3 ft 5 in	
Minimum ground clearance (Pot hole protector – raised/lowered)	100 mm / 20 mm	4 in / 1 in	
Dimension of working platform	d.Length	2.277 m	7 ft 5 in
	e.Width	1.12 m	3 ft 8 in
	Height	1.263 m	4 ft 2 in
	Extension length of auxiliary platform	0.90 m	2 ft 11 in
Machine Center of Gravity	Horizontal distance to front axle	0.95 m	3 ft 1 in
	Height of Center of Gravity	0.663 m	2 ft 2 in
Total weight of machine	3000 kg	6613 lb	
Maximum height of platform	10 m	32 ft 10 in	
Minimum height of platform	1.34 m	4 ft 5 in	
Maximum working height	12 m	39 ft 4 in	
Minimum turning radius (inner wheel/outer wheel)	0 m / 2.3 m	0 in / 7 ft 6 in	
Work platform lift capacity	320 kg	705 lb	
Work platform lift capacity – platform extended	115 kg	253 lb	
Work platform lift time	50 s - 75 s	50 s - 75 s	
Work platform descend time	43 s - 65 s	43 s - 65 s	
Maximum Drive Speed - Lowered	4 km/h	2.49 mph	
Maximum Drive Speed - Elevated	0.8 km/h	0.5 mph	
Maximum theoretical gradeability	25%	25%	
Tilt warning angle (side, forward, and backward)	1.5° / 3°	1.5° / 3°	
Rated motor power	4.5 kW	6.03 hp	
Battery	Model	3-EV-225	3-EV-225
	Voltage	24 V	24 V
	Capacity	280Ah	280Ah
	Manufacturer	Leoch	Leoch
Tire models	Non-marking and solid / 381x127		